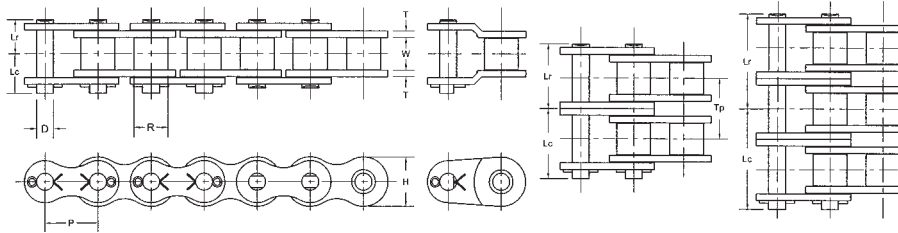


## 240 ASME/ANSI Roller Chain



### Chain Dimensions

Note: Rated Working Load is to be used only in conjunction with "slow speed selection method"

Common Dimensions (Inches)									
ASME/ANSI Chain Number	Chain Pitch P	Inside Width W	Roller Diameter R	Pin Diameter D	Link Plate Thickness T	Roller Link Plate Height H	Number of Links in 10ft	Available Construction	
								Cottered	Riveted
240	3	1.875	1.875	0.937	0.375	2.768	40	Yes	Yes

Pin Lengths and Chain Ratings									
ASME/ANSI Chain Number	Number of Strands	Riv. Pin End to C/L of Chain Lr	Cot. Pin End to C/L of Chain Lc	Overall Length Riveted Pin Lr + Lr	Overall Length Conn. Pin Lr + Lc	Transverse Pitch for Multi-strand TP	Rated Working Load (lbs)	Average Ultimate Strength (lbs)	Average Chain Weight (lbs/ft)
240	1	1.900	2.198	3.800	4.098	-	25,400	152,000	15.89
240-2	2	3.626	3.925	7.252	7.551	3.457	43,180	304,000	31.67
240-3	3	5.354	5.654	10.708	11.008	3.457	63,500	456,000	47.45
240-4	4	7.083	7.382	14.166	14.465	3.457	83,820	608,000	63.23
240-5	5	8.812	9.110	17.624	17.922	3.457	99,060	760,000	79.00
240-6	6	10.541	10.838	21.082	21.379	3.457	116,840	912,000	94.80

### Horsepower Ratings

Please consult Hitachi Maxco product engineering for horsepower ratings to the right of the black boundary line.

Number Teeth Small Sprocket	Maximum Speed of Small Sprocket (rpm)																			
	5	10	15	20	25	30	40	50	60	80	100	125	150	175	200	250	300	350	400	450
9	5.63	10.51	15.13	19.60	23.96	28.24	36.58	44.72	52.69	68.27	83.45	102.01	120.20	138.09	155.72	190.35	212.73	168.81		
10	6.31	11.77	16.96	21.97	26.85	31.64	40.99	50.11	59.04	76.49	93.51	114.30	134.68	154.73	174.49	213.30	249.15	197.72		
11	6.99	13.05	18.79	24.35	29.76	35.07	45.44	55.54	65.44	84.79	103.64	126.69	149.29	171.50	193.40	236.42	278.58	228.10	187.0	156.0
12	7.68	14.33	20.65	26.75	32.70	38.53	49.91	61.01	71.89	93.14	113.85	139.18	164.00	188.40	212.46	259.72	306.03	259.91	213.0	
13	8.37	15.63	22.51	29.16	35.65	42.01	54.42	66.52	78.38	101.55	124.14	151.74	178.80	205.41	231.64	283.17	333.66	293.06	240.0	
14	9.07	16.93	24.39	31.59	38.62	45.51	58.95	72.07	84.92	110.01	134.48	164.39	193.70	222.53	250.95	306.76	361.46	327.52	268.0	
15	9.77	18.24	26.27	34.04	41.61	49.03	63.51	77.64	91.49	118.52	144.88	177.11	208.69	239.74	270.36	330.49	389.43	363.23	297.0	
16	10.48	19.56	28.17	36.49	44.61	52.56	68.10	83.25	98.09	127.08	155.34	189.89	223.75	257.05	289.88	354.35	417.54	400.15	328.0	
17	11.19	20.88	30.07	38.96	47.63	56.12	72.71	88.88	104.73	135.68	165.85	202.74	238.89	274.44	309.49	378.33	445.79	438.25	359.0	
18	11.90	22.21	31.99	41.44	50.66	59.70	77.34	94.54	111.40	144.31	176.41	215.65	254.10	291.92	329.20	402.42	474.18	477.48	377.0	
19	12.62	23.54	33.91	43.94	53.71	63.28	81.99	100.22	118.09	152.99	187.02	228.62	269.38	309.47	348.99	426.61	502.69	517.81	393.0	
20	13.34	24.89	35.85	46.44	56.77	66.89	86.66	105.93	124.82	161.71	197.67	241.64	284.73	327.10	368.87	450.91	531.32	559.23	407.0	
21	14.06	26.23	37.78	48.95	59.84	70.51	91.35	111.66	131.57	170.46	208.37	254.71	300.13	344.80	388.83	475.31	560.07	601.69	421.0	
22	14.78	27.58	39.73	51.47	62.92	74.14	96.05	117.42	138.35	179.24	219.11	267.84	315.60	362.57	408.86	499.80	588.93	645.18	435.0	
23	15.51	28.94	41.69	54.00	66.02	77.79	100.78	123.19	145.16	188.05	229.88	281.01	331.12	380.40	428.97	524.38	617.89	689.66	448.0	
24	16.24	30.30	43.65	56.54	69.12	81.45	105.52	128.98	151.98	196.90	240.69	294.23	346.69	398.29	449.15	549.05				
25	16.97	31.67	45.61	59.09	72.24	85.12	110.27	134.80	158.84	205.77	251.54	307.49	362.32	416.24	469.39	573.80				
26	17.70	33.04	47.59	61.65	75.36	88.80	115.04	140.63	165.71	214.68	262.43	320.79	378.00	434.25	489.70	598.62				
Lube	Type A					Type B					Type C									

- Type A: Manual or Drip Lubrication
- Type B: Bath or Slinger Disc Lubrication
- Type C: Oil Stream or Pressure Spray Lubrication

Horsepower values given in the tables are for single strand chains. For multiple strand chains use the "Multi-Strand Factors" below.

Number of Strands Factor	Multi-Strand Factors				
	2	3	4	5	6
	1.7	2.5	3.3	3.9	4.6