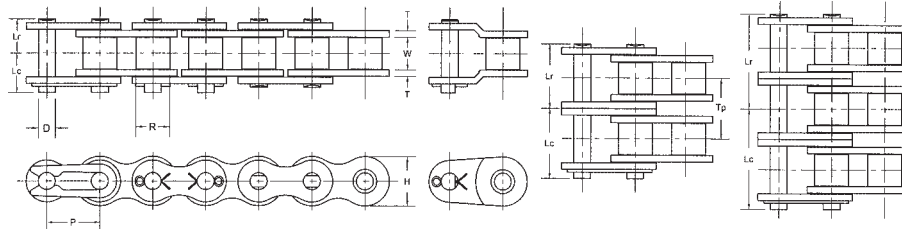


60 ASME/ANSI Roller Chain



Chain Dimensions

Note: Rated Working Load is to be used only in conjunction with "slow speed selection method"

Common Dimensions (Inches)									
ASME/ANSI Chain Number	Chain Pitch P	Inside Width W	Roller Diameter R	Pin Diameter D	Link Plate Thickness T	Roller Link Plate Height H	Number of Links in 10ft	Available Construction	
60	3/4	0.500	0.469	0.234	0.094	0.691	160	Yes	Yes

Pin Lengths and Chain Ratings									
ASME/ANSI Chain Number	Number of Strands	Riv. Pin End to C/L of Chain Lr	Cot. Pin End to C/L of Chain Lc	Overall Length Riveted Pin Lr + Lr	Overall Length Conn. Pin Lr + Lc	Transverse Pitch for Multi-strand TP	Rated Working Load (lbs)	Average Ultimate Strength (lbs)	Average Chain Weight (lbs/ft)
60	1	0.500	0.548	1.000	1.048	-	2,470	9,900	0.98
60-2	2	0.945	1.000	1.890	1.945	0.898	4,200	19,800	1.98
60-3	3	1.386	1.457	2.772	2.843	0.898	6,180	29,700	2.98
60-4	4	1.858	1.869	3.716	3.727	0.898	8,150	39,600	3.98
60-5	5	2.304	2.340	4.608	4.644	0.898	9,630	49,500	4.98
60-6	6	2.760	2.778	5.520	5.538	0.898	11,360	59,400	5.98

Horsepower Ratings

Please consult Hitachi Maxco product engineering for horsepower ratings to the right of the black boundary line.

Number Teeth Small Sprocket	Maximum Speed of Small Sprocket (rpm)																								
	10	25	50	100	150	200	300	400	500	600	700	800	900	1000	1100	1200	1400	1600	1800	2000	2500	3000	3500	4000	4500
9	0.23	0.52	0.97	1.81	2.61	3.38	4.87	6.31	7.71	9.09	10.44	11.78	13.09	11.53	9.99	8.77	6.96	5.70	4.77	4.08					
10	0.26	0.58	1.09	2.03	2.92	3.79	5.46	7.07	8.64	10.18	11.70	13.19	14.67	13.51	11.71	10.27	8.15	6.67	5.59	4.77					
11	0.28	0.65	1.21	2.25	3.24	4.20	6.05	7.84	9.58	11.29	12.97	14.63	16.26	15.58	13.51	11.85	9.41	7.70	6.45	5.51	3.94	3.00	2.38	1.95	1.63
12	0.31	0.71	1.32	2.47	3.56	4.61	6.65	8.61	10.52	12.40	14.25	16.07	17.86	17.75	15.39	13.51	10.72	8.77	7.35	6.28	4.49	3.42	2.71	2.22	1.86
13	0.34	0.77	1.44	2.70	3.88	5.03	7.25	9.39	11.48	13.52	15.53	17.52	19.48	20.02	17.35	15.23	12.08	9.89	8.29	7.08	5.06	3.85	3.06	2.50	
14	0.37	0.84	1.57	2.92	4.21	5.45	7.85	10.17	12.43	14.65	16.83	18.98	21.10	22.37	19.39	17.02	13.51	11.05	9.26	7.91	5.66	4.31	3.42	2.80	
15	0.40	0.90	1.69	3.15	4.53	5.87	8.46	10.96	13.39	15.78	18.13	20.44	22.73	24.81	21.51	18.87	14.98	12.26	10.27	8.77	6.28	4.77	3.79	3.10	
16	0.42	0.97	1.81	3.37	4.86	6.30	9.07	11.75	14.36	16.92	19.44	21.92	24.37	26.80	23.69	20.79	16.50	13.51	11.32	9.66	6.91	5.26	4.17	3.42	
17	0.45	1.03	1.93	3.60	5.19	6.72	9.68	12.54	15.33	18.07	20.75	23.40	26.02	28.61	25.95	22.77	18.07	14.79	12.40	10.58	7.57	5.76	4.57	3.74	
18	0.48	1.10	2.05	3.83	5.52	7.15	10.30	13.34	16.31	19.22	22.08	24.89	27.68	30.43	28.27	24.81	19.69	16.11	13.51	11.53	8.25	6.28	4.98	4.08	
19	0.51	1.17	2.18	4.06	5.85	7.58	10.92	14.14	17.29	20.37	23.40	26.39	29.34	32.26	30.66	26.91	21.35	17.48	14.65	12.50	8.95	6.81	5.40	4.42	
20	0.54	1.23	2.30	4.29	6.18	8.01	11.54	14.95	18.27	21.53	24.74	27.89	31.01	34.10	33.11	29.06	23.06	18.87	15.82	13.51	9.66	7.35	5.83		
21	0.57	1.30	2.42	4.53	6.52	8.44	12.16	15.76	19.26	22.70	26.07	29.40	32.69	35.94	35.62	31.26	24.81	20.31	17.02	14.53	10.40	7.91	6.28		
22	0.60	1.37	2.55	4.76	6.85	8.88	12.79	16.57	20.25	23.87	27.42	30.92	34.38	37.80	38.20	33.52	26.60	21.77	18.25	15.58	11.10	8.48	6.73		
23	0.63	1.43	2.68	4.99	7.19	9.32	13.42	17.38	21.25	25.04	28.77	32.44	36.07	39.65	40.83	35.84	28.44	23.28	19.51	16.66	11.90	9.07	7.19		
24	0.66	1.50	2.80	5.23	7.53	9.75	14.05	18.20	22.25	26.22	30.12	33.97	37.76	41.52	43.52	38.20	30.31	24.81	20.79	17.75	12.70	9.66	7.67		
25	0.69	1.57	2.93	5.46	7.87	10.19	14.68	19.02	23.25	27.40	31.48	35.50	39.47	43.39	46.27	40.61	32.23	26.38	22.11	18.87	13.50	10.30	8.15		
26	0.72	1.64	3.05	5.70	8.21	10.63	15.32	19.84	24.26	28.58	32.84	37.03	41.17	45.27	49.08	43.07	34.18	27.98	23.44	20.02	14.30	10.90	8.65		
28	0.78	1.77	3.31	6.17	8.89	11.52	16.59	21.50	26.28	30.97	35.57	40.12	44.60	49.04	53.43	48.14	38.20	31.26	26.20	22.37	16.00	12.20			
30	0.84	1.91	3.56	6.65	9.58	12.41	17.88	23.16	28.31	33.36	38.33	43.22	48.05	52.83	57.57	53.38	42.36	34.67	29.06	24.81	17.80	13.50			
32	0.90	2.05	3.82	7.13	10.27	13.31	19.17	24.83	30.36	35.77	41.09	46.34	51.52	56.65	61.72	58.81	46.67	38.20	32.01	27.33	19.60	14.90			
35	0.99	2.26	4.21	7.86	11.32	14.66	21.12	27.36	33.44	39.41	45.27	51.05	56.76	62.40	67.99	67.27	53.38	43.69	36.62	31.26	22.40	17.00			
40	1.14	2.61	4.86	9.08	13.07	16.93	24.39	31.60	38.63	45.52	52.29	58.97	65.56	72.09	78.54	82.19	65.22	53.38	44.74	38.20	27.30				
45	1.30	2.96	5.52	10.31	14.84	19.23	27.70	35.89	43.87	51.69	59.39	66.97	74.46	81.86	89.20	96.46	77.8	63.7	53.38	45.58	32.60				

- Type A: Manual or Drip Lubrication
- Type B: Bath or Slinger Disc Lubrication
- Type C: Oil Stream or Pressure Spray Lubrication

Horsepower values given in the tables are for single strand chains. For multiple strand chains use the "Multi-Strand Factors" below.

Number of Strands Factor	Multi-Strand Factors				
	2	3	4	5	6
	1.7	2.5	3.3	3.9	4.6